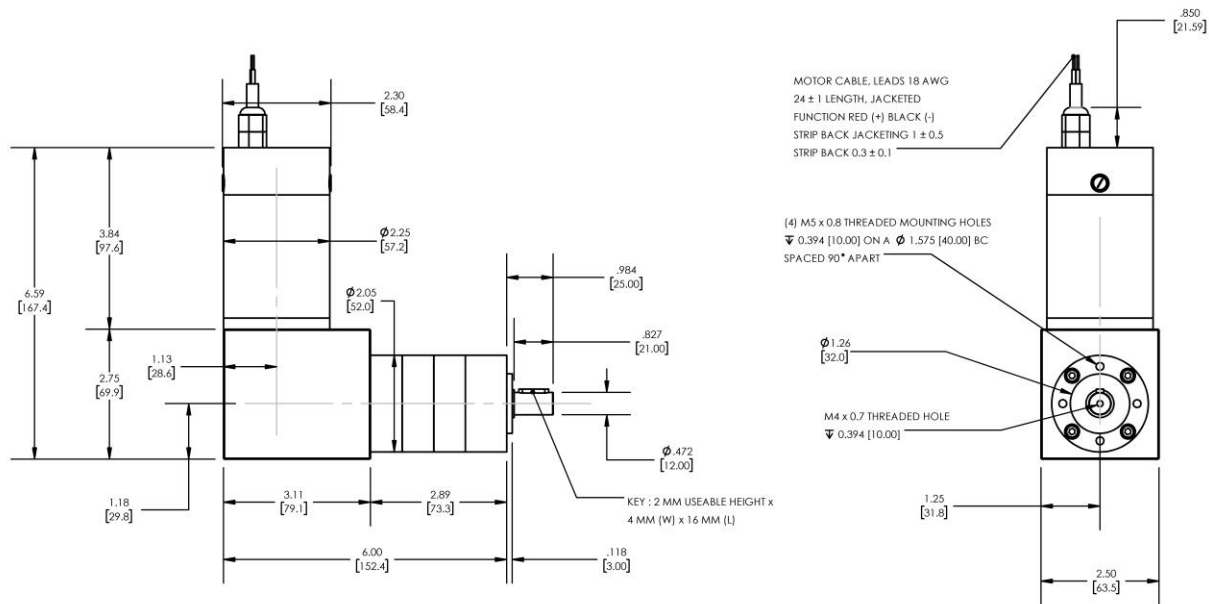


**Model Number:**

**MMP TM57-42-36V GRA52-139**



DIMENSIONS ARE INCHES [MM] UNLESS OTHERWISE STATED

PLANETARY GEARMOTOR OUTPUT PARAMETERS:	VALUE	UNITS	TOLERANCE
Gearhead Ratio (exact)	139.13 : 1		
Gearhead Shaft Output Speed (at full-load)	22	RPM	MAX
Gearmotor Rated Continuous Torque	183	In-Lbs	MAX
Gearmotor Rated Peak Torque	443++	In-Lbs	----
Gearhead Standard Backlash	48	Arc Minutes	MAX
Gearhead Efficiency	70%	----	----
Output Shaft Radial Load Capacity	102	Lbs	MAX
Output Shaft Axial Load Capacity	34	Lbs	MAX
Gearmotor Total Weight	6.1	Lbs	MAX

++ All Peak Torque values are dependent upon duty. Contact our sales office for details.

DC MOTOR PERFORMANCE PARAMETERS:	VALUE	UNITS	TOLERANCE
Rated DC Voltage	36	DC VOLTS	----
Rated Continuous Current	3.0	AMPERES	----
No-Load Speed	4186	RPM	MAX
Rated Speed	3045	RPM	+/- 15%
Rated Continuous Power Out	68	WATTS	+/- 15%
Rated Continuous Torque	30	OZ-IN	----
Peak Torque (motor only)	84	OZ-IN	----
No-Load Current	0.35	AMPERES	MAX
Back EMF Constant (Ke)	8.6	V/KRPM	+/- 10%
Torque Constant (Kt)	11.6	OZ-IN/AMP	+/- 10%
DC Armature Resistance	3.31	OHMS	+/- 15%
Armature Inductance	5.14	mH	+/- 15%
Armature temperature	155	DEG. C	MAX

**NOTES:**

- NEMA MOUNTING FLANGE OPTION AVAILABLE - [FOLLOW THIS LINK FOR DETAILS](#)

## MIDWEST MOTION PRODUCTS, INC

DESIGN, MANUFACTURING & DISTRIBUTION - MOTION CONTROL EQUIPMENT

[www.midwestmotion.com](http://www.midwestmotion.com)

email: [sales@midwestmotion.com](mailto:sales@midwestmotion.com)